

# RivetKing® ABS Series • Aluminum/Steel Rivets • Open End

RIVET: 5056 ALUMINUM • MANDREL: STEEL PHOSPHATED – RIVET: 5052 ALUMINUM • MANDREL: STEEL ZINC PLATED

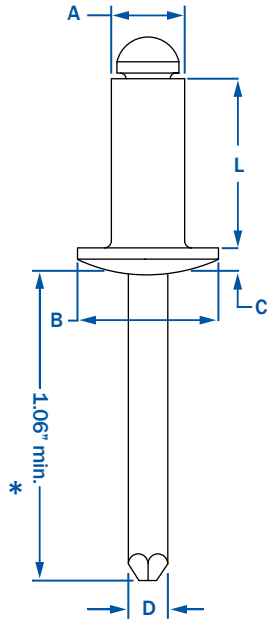
ALUMINUM/STEEL RIVETS ARE OFFERED IN TWO CONFIGURATIONS. CELUS® BRAND, 5056 ALUMINUM WITH STEEL PHOSPHATED MANDREL AND RIVETKING® BRAND 5052 ALUMINUM WITH STEEL ZINC PLATED MANDREL. Phosphated mandrels reduce rivet gun jaw cleaning, while zinc plated mandrels provide for greater rust protection. The aluminum rivet body is bright polished to protect from oxidation. The ABS series is ranked #4 in shear and tensile strength in the standard open end rivet category.



STANDARD BLIND RIVETS

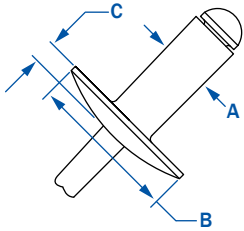


STANDARD FLANGE-DOME HEAD



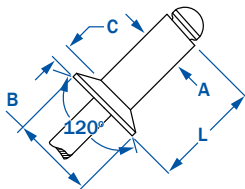
A			L	B	C	D				
DIA.	PART NUMBER	GRIP RANGE	RIVET LENGTH	HEAD DIA.	HEAD HEIGHT	MANDREL DIA.	HOLE SIZE (DRILL #)	STRENGTH		Wt.
								SHEAR	TENSILE	lbs/M
3/32"	ABS - 32	.020 - .125	.250	.188	.032	.057	.097 - .100 (#41)	90	120	1.30
	ABS - 34	.126 - .250	.375					[70]	[80]	1.30
1/8"	ABS - 41	.020 - .062	.212	.250	.040	.076	.129 - .133 (#30)	170 [120]	220 [150]	2.50
	ABS - 42	.063 - .125	.275							2.50
	ABS - 43	.126 - .187	.337							2.60
	ABS - 44	.188 - .250	.400							2.70
	ABS - 45	.251 - .312	.462							2.70
	ABS - 46	.313 - .375	.525							2.80
	ABS - 48	.376 - .500	.650							3.10
	ABS - 410	.501 - .625	.775							3.10
	ABS - 412	.626 - .750	.900							
	5/32"	ABS - 52	.020 - .125							.300
ABS - 53		.126 - .187	.362	4.25						
ABS - 54		.188 - .250	.425	4.38						
ABS - 56		.251 - .375	.550	5.17						
ABS - 58		.376 - .500	.675	5.17						
3/16"	ABS - 62	.020 - .125	.325	.375	.060	.114	.192 - .196 (#11)	380 [260]	500 [320]	6.20
	ABS - 63	.126 - .187	.387							
	ABS - 64	.188 - .250	.450							7.00
	ABS - 66	.251 - .375	.575							7.20
	ABS - 68	.376 - .500	.700							7.75
	ABS - 610	.501 - .625	.825							8.75
	ABS - 612	.626 - .750	.950							9.00
	ABS - 614	.751 - .875	1.075							
	ABS - 616	.876 - 1.00	1.200							10.33
	1/4"	ABS - 84	.020 - .250							.500
ABS - 86		.251 - .375	.625	14.00						
ABS - 88		.376 - .500	.750	15.00						
ABS - 810		.501 - .625	.875	16.00						
ABS - 812		.626 - .750	1.000	16.00						
ABS - 814		.751 - .875	1.125	21.00						
ABS - 816		.876 - 1.00	1.250	21.00						

LARGE FLANGE



1/8"	ABS - 42LF	.063 - .125	.275	.375	.065	.076	.129 - .133 (#30)	170 [120]	220 [150]	2.60
	ABS - 43LF	.126 - .187	.337							2.70
	ABS - 44LF	.188 - .250	.400							2.70
	ABS - 46LF	.313 - .375	.525							3.25
	ABS - 48LF	.376 - .500	.650							
5/32"	ABS - 52LF	.020 - .125	.300	.468	.075	.095	.160 - .164 (#20)	260 [190]	350 [230]	5.00
	ABS - 54LF	.188 - .250	.425							
	ABS - 56LF	.251 - .375	.550							
3/16"	ABS - 62LF	.020 - .125	.325	.625	.092	.114	.192 - .196 (#11)	380 [260]	500 [320]	8.00
	ABS - 64LF	.188 - .250	.450							9.00
	ABS - 66LF	.251 - .375	.575							9.33
	ABS - 68LF	.376 - .500	.700							10.50
	ABS - 610LF	.501 - .625	.825							10.50
	ABS - 612LF	.626 - .750	.950							11.50
	ABS - 614LF	.751 - .875	1.075							12.00
1/4"	ABS - 88LF	.376 - .500	.750	.750	1.07	.151	.257 - .261	700 [460]	920 [560]	

COUNTERSUNK



1/8"	ACS - 42	.063 - .125	.275	.220	.031	.076	.129 - .133 (#30)	170 [120]	220 [150]	2.60
	ACS - 43	.126 - .187	.337							2.60
	ACS - 44	.188 - .250	.400							2.70
5/32"	ACS - 54	.188 - .250	.425	.281	.040	.095	.160 - .164	260 [190]	350 [230]	4.13
3/16"	ACS - 64	.188 - .250	.450	.350	.050	.114	.192 - .196 (#11)	380 [260]	500 [320]	6.40
	ACS - 66	.251 - .375	.575							7.40

\* 1/4" DIAMETER RIVETS HAVE A 1.250 MANDREL LENGTH MINIMUM.

\*\* CELUS® 5056 ALUMINUM/STEEL PHOSPHATED ARE PER IFI 114 GRADE 19 AND DO NOT HAVE A SUFFIX

\*\*\* RIVETKING® 5052 ALUMINUM/STEEL ZINC PLATED ARE PER IFI 114 GRADE 18 ARE IN BRACKETED ABOVE AND HAVE /IR AS THE SUFFIX