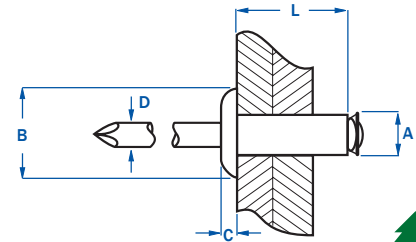
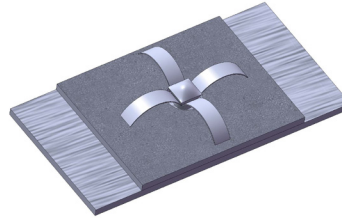




RivetKing® PLR™ Rivet

ALUMINUM/ STEEL

RivetKing® PLR™ Rivet work great in plastic and soft materials with out of round holes. The rivet is scored by the mandrel and split into three parts. TS-16949 produced and when applicable on steel, trivalent zinc plated for ROHS and GMW3044 compliance.



RIVET SIZE	PART NUMBER	GRIP RANGE MAX.	A		B		C	L		HOLE SIZE	SHEAR	TENSILE
			SHANK DIAMETER MIN.	SHANK DIAMETER MAX.	HEAD DIAMETER MIN.	HEAD DIAMETER MAX.	HEAD HEIGHT MAX.	LENGTH MIN.	LENGTH MAX.			
1/8"	ABSM3.2X8/PLR	.138	.121	.129	.229	.264	.051	.315	.354	.129	225	270
	ABSM3.2X10/PLR	.197	.121	.129	.229	.264	.051	.394	.433			
	ABSM3.2X12/PLR	.275	.121	.129	.229	.264	.051	.472	.511			
	ABSM3.2X14/PLR	.354	.121	.129	.229	.264	.051	.551	.590			
	ABSM3.2X16/PLR	.433	.121	.129	.229	.264	.051	.630	.669			
ABSM3.2X18/PLR	.512	.121	.129	.229	.264	.051	.709	.748				
5/32"	ABSM4X8/PLR	.157	.152	.158	.272	.331	.067	.315	.354	.165	324	325
	ABSM4X10/PLR	.236	.152	.158	.272	.331	.067	.394	.433			
	ABSM4X12/PLR	.315	.152	.158	.272	.331	.067	.472	.511			
	ABSM4X14/PLR	.393	.152	.158	.272	.331	.067	.551	.590			
	ABSM4X16/PLR	.479	.152	.158	.272	.331	.067	.630	.669			
	ABSM4X18/PLR	.551	.152	.158	.272	.331	.067	.709	.748			
ABSM4X20/PLR	.630	.152	.158	.272	.331	.067	.787	.826				
ABSM4X25/PLR	.826	.152	.158	.272	.331	.067	.984	1.023				
3/16"	ABSM4.8X10/PLR	.197	.183	.193	.327	.398	.079	.394	.433	.196	405	353
	ABSM4.8X12/PLR	.275	.183	.193	.327	.398	.079	.472	.511			
	ABSM4.8X14/PLR	.354	.183	.193	.327	.398	.079	.551	.590			
	ABSM4.8X16/PLR	.433	.183	.193	.327	.398	.079	.630	.669			
	ABSM4.8X18/PLR	.512	.183	.193	.327	.398	.079	.709	.748			
	ABSM4.8X21/PLR	.630	.183	.193	.327	.398	.079	.827	.865			
	ABSM4.8X24/PLR	.748	.183	.193	.327	.398	.079	.945	.984			
	ABSM4.8X27/PLR	.866	.183	.193	.327	.398	.079	1.063	1.102			
	ABSM4.8X30/PLR	.984	.183	.193	.327	.398	.079	1.181	1.220			
	ABSM4.8X32/PLR	1.063	.183	.193	.327	.398	.079	1.260	1.248			
	ABSM4.8X35/PLR	1.181	.183	.193	.327	.398	.079	1.378	1.417			
	ABSM4.8X40/PLR	1.260	.183	.193	.327	.398	.079	1.575	1.614			
	ABSM4.8X45/PLR	1.456	.183	.193	.327	.398	.079	1.772	1.810			
ABSM4.8X51/PLR	1.653	.183	.193	.327	.398	.079	1.968	2.007				
5MM	ABSM5X40/PLR	1.260	.193	.201	.342	.413	.079	1.575	1.614	.204	450	472
	ABSM5X45/PLR	1.456	.193	.201	.342	.413	.079	1.772	1.810			
	ABSM5X50/PLR	1.653	.193	.201	.342	.413	.079	1.968	2.007			
	ABSM5X55/PLR	1.850	.193	.201	.342	.413	.079	2.165	2.204			
	ABSM5X60/PLR	2.047	.193	.201	.342	.413	.079	2.362	2.401			
	ABSM5X65/PLR	2.244	.193	.201	.342	.413	.079	2.559	2.598			
	ABSM5X70/PLR	2.440	.193	.201	.342	.413	.079	2.756	2.795			
	ABSM5X75/PLR	2.677	.193	.201	.342	.413	.079	2.952	2.991			
	ABSM5X80/PLR	2.834	.193	.201	.342	.413	.079	3.149	3.188			
	ABSM5X90/PLR	3.149	.193	.201	.342	.413	.079	3.543	3.582			
	ABSM5X100/PLR	3.543	.193	.201	.342	.413	.079	3.937	3.976			
	ABSM5X110/PLR	3.937	.193	.201	.342	.413	.079	4.330	4.369			
	ABSM5X120/PLR	4.330	.193	.201	.342	.413	.079	4.724	4.763			
	ABSM5X130/PLR	4.724	.193	.201	.342	.413	.079	5.118	5.157			
	ABSM5X140/PLR	5.119	.193	.201	.342	.413	.079	5.512	5.551			
	ABSM5X150/PLR	5.511	.193	.201	.342	.413	.079	5.905	5.944			
	ABSM5X160/PLR	5.905	.193	.201	.342	.413	.079	6.299	6.338			
ABSM5X170/PLR	6.299	.193	.201	.342	.413	.079	6.693	6.732				
ABSM5X180/PLR	6.692	.193	.201	.342	.413	.079	7.086	7.125				
ABSM5X190/PLR	7.086	.193	.201	.342	.413	.079	7.480	7.519				
1/4"	ABSM6.4X35/PLR	1.181	.246	.256	.457	.528	.106	1.378	1.417	.260	550	786
	ABSM6.4X50/PLR	1.653	.246	.256	.457	.528	.106	1.968	2.007			
	ABSM6.4X80/PLR	2.834	.246	.256	.457	.528	.106	3.149	3.188			
	ABSM6.4X100/PLR	3.543	.246	.256	.457	.528	.106	3.937	3.976			
	ABSM6.4X120/PLR	4.330	.246	.256	.457	.528	.106	4.724	4.763			
	ABSM6.4X150/PLR	5.511	.246	.256	.457	.528	.106	5.905	5.944			
	ABSM6.4X175/PLR	6.496	.246	.256	.457	.528	.106	6.890	6.928			
ABSM6.4X200/PLR	7.480	.246	.256	.457	.528	.106	7.874	7.913				