

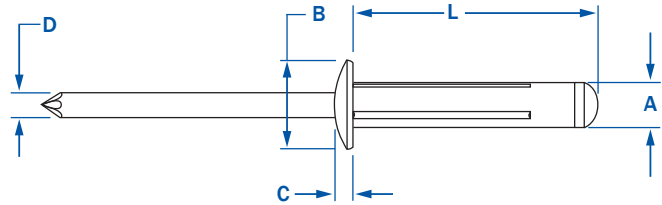


RivetKing® Trifix™

ALL ALUMINUM • TRI-FOLDING RIVET

RIVET: ALUMINUM | MANDREL: ALUMINUM

Perfect for inconsistent grip ranges or oversize out-of-round holes that are typical in plastics. RivetKing® Trifix™ is designed to work like a moly-bolt in that it splits out into three legs at the backside. Its extended bearing surface spreads the load over a wider area to prevent pullout in plastics or other similar soft or thin sheet materials. Bright polished and stocked in white, black and almond colors.



SAMPLE COLOR OF THE TRIFIX™

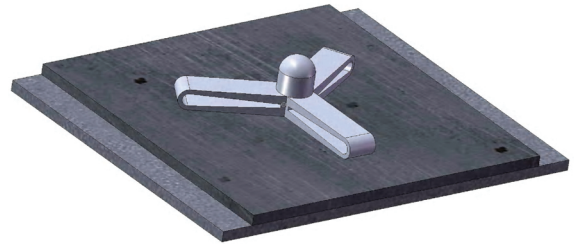


STOCK COLORS

WHITE PAINTED	ALMOND PAINTED	BLACK PAINTED	BLACK ANODIZED
WHT	ALM	BLK	BA



* Can color match to Pantone, RAL or sample upon request.



HEAD STYLE	PART NUMBER	RIVET SIZE	GRIP RANGE		LENGTH	HEAD DIA	HEAD HEIGHT	MANDREL DIA	HOLE SIZE	SHEAR	TENSILE
			MIN - MAX	REF.	NOM.	NOM.	NOM.	MIN - MAX	TYPICAL LBS.F	TYPICAL LBS.F	
DOME HEAD	ABL - 0516	5/32"	.040 - .118	.605	.315	.032	.094	.165 - .178	134	224	
	ABL - 0523		.040 - .275	.810							
	ABL - 0530		.157 - .472	1.070							
	ABL - 0619	3/16"	.040 - .157	.684	.386	.062	.114	.196 - .209	202	269	
	ABL - 0625		.040 - .354	.906							
	ABL - 0630		.157 - .472	1.070							
	ABL - 0640		.157 - .625	1.200							
LARGE FLANGE	ABL - 0523LF	5/32"	.040 - .275	.810	.472	.055	.094	.165 - .178	134	224	
	ABL - 0625LF14	3/16"	.040 - .354	.906	.551	.062	.114	.196 - .209	202	269	
	ABL - 0625LF16				.625	.070					
PAINTED DOME HEAD	ABL - 0523/ BA	5/32"	.040 - .275	.810	.315	.032	.094	.165 - .178	134	224	
	ABL - 0625/ WHT	3/16"	.040 - .354	.906	.386	.062	.114	.196 - .209	202	269	
	ABL - 0625/ ALM										
	ABL - 0625/ BA	3/16"	.157 - .472	1.070	.386	.062	.114	.196 - .209	202	269	
	ABL - 0630/ WHT										
	ABL - 0630/ ALM										
ABL - 0630/ BA											